



LAKEVIEW LODGE



Lakeside Elevation

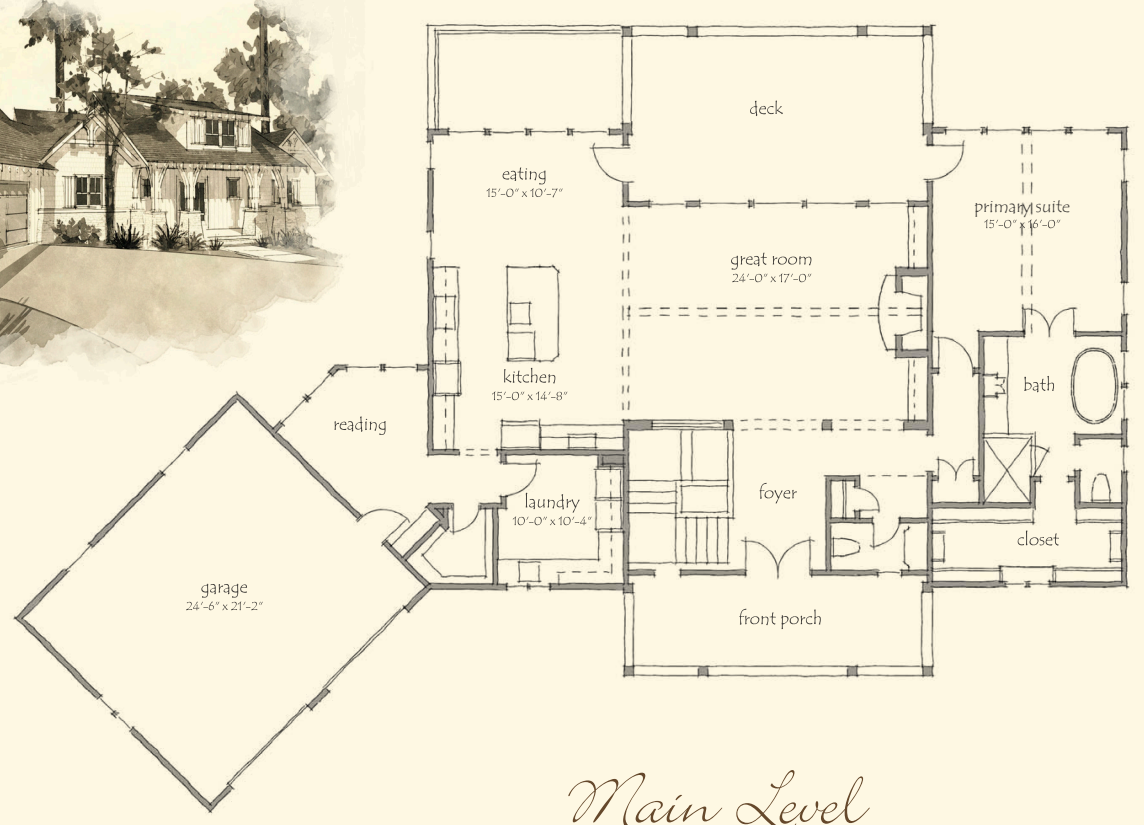
- Architect: Mitch Ginn
- Four bedrooms and four and one-half bathrooms
- Primary suite on main level
- Open kitchen-dining-living area providing wonderful lake views
- Additional features include office and oversized laundry
- Handsomely crafted stone fireplace with vaulted ceilings
- Upscale appliance package
- Great covered porch off living area and primary suite
- Wonderful lake-level living with three bedrooms, family room, bar and covered terrace
- Two-car garage linked to mudroom
- Thoughtfully designed with lake-prep storage room and inside lake-level storage
- 3,962 sq. ft. of conditioned space



Street Side Elevation

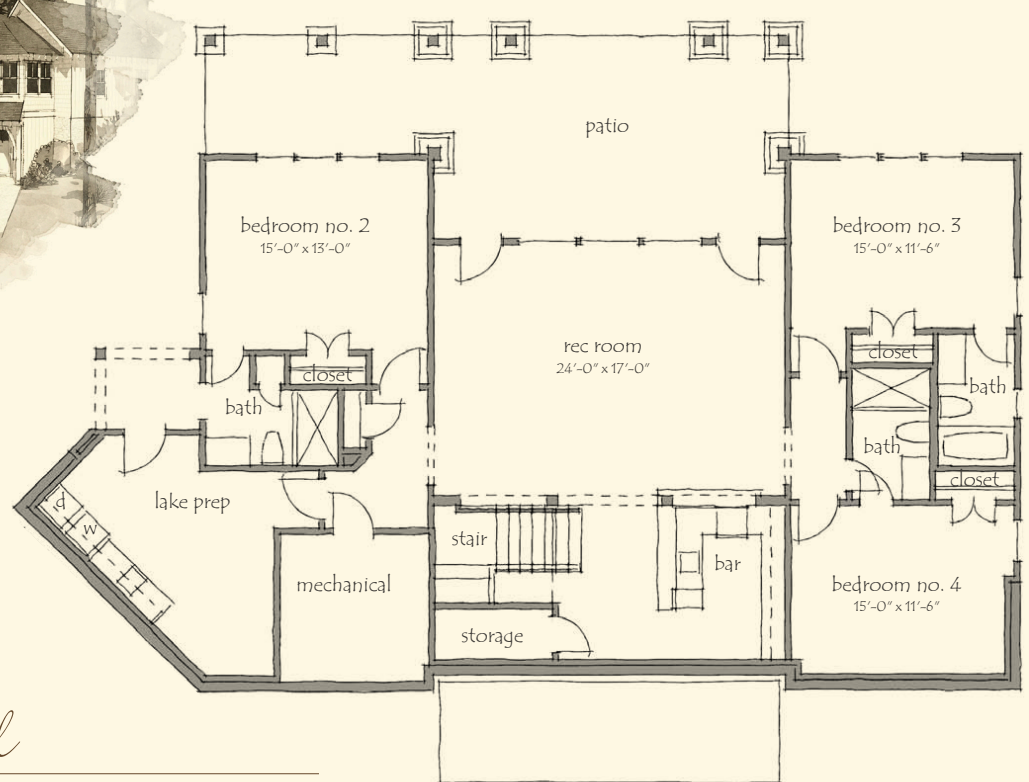
PRICE: Pricing will depend on final features and lot selection.

For additional information about Russell Lands neighborhoods, call 256.215.7011 or visit www.RussellLands.com.



Main Level

LAKEVIEW LODGE
2,039 Heated Sq. Ft.



Lake Level

LAKEVIEW LODGE
1,923 Heated Sq. Ft.